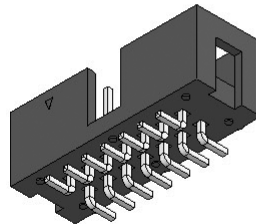


## Box Header 2.54 mm 90° & 180° & SMT Series

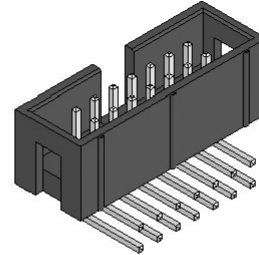
### SPECIFICATIONS

Current Rating: 3 A  
 Insulator Resistance: 5000 MOhm min.  
 Dielectric Withstanding: AC 1000 V  
 Operating Temperature: -40°C ~ +105°C  
 Soldering Temperature: 260°C for 3~5sec. max  
 Contact Material: Copper Alloy  
 Insulator Material: Polyester, UL 94V-0  
 Standard: P.B.T.  
 Finish: Tin, Gold or Duplex Plated  
 Standard: Gold Flash all over  
 Note: Duplex Plating: Gold Plated on contact area, Tin on solder area

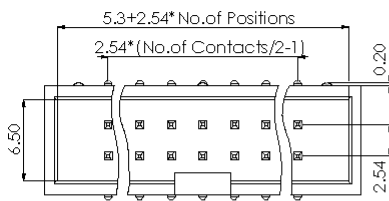
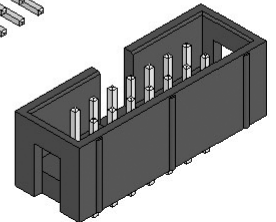
**B210-M0GN-D095-XX**



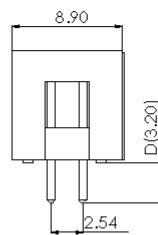
**B210-R1GP-D032-XX**



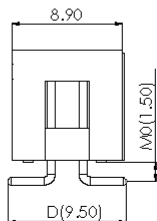
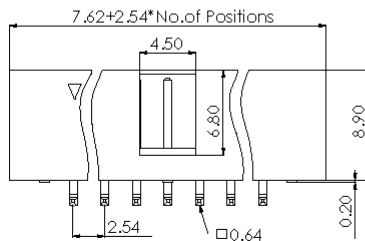
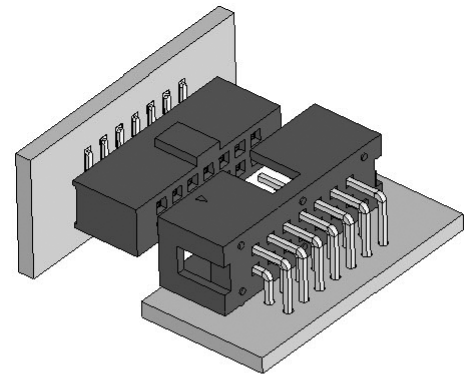
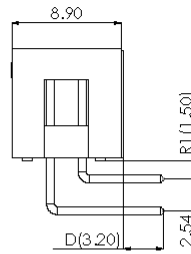
**B210-SGP-D032-XX**



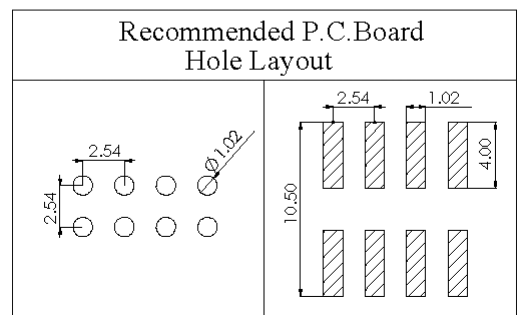
**[B210]**



**[B210]**



**[B210]**



### How to order

Unit: mm

Series	Connector Type	Contact Plating	Material	Pin Length mm	Number of Contacts
<b>BXXX</b>	<b>X</b>	<b>X</b>	<b>X</b>	<b>DXXX</b>	<b>XX</b>
B210:B/H 2.54 H:9.10 Dual Row	S: Straight Type R: Right Angle R1: 1.50 : M: SMT Type M0: 1.50 : :	G: Gold Flash T: Tin Plated A: 10U" Gold B: 15U" Gold C: 20U" Gold ⊙ Duplex Plating D: Gold Flash/Tin (Standard: G)	P: PBT N: Nylon-6T	S-D D032 R-D D032 M-D D095	(06 TO 64 Contacts)